

MORTON GROVE PARK DISTRICT



HARRER POOL REDEVELOPMENT
UPDATE
17 APRIL 2019

|||||

|||||

|||||

AGENDA

- CONCEPTUAL PLAN UPDATES
- MAGNITUDE OF INITIAL COST DISCUSSION
- NEXT STEPS

AGENDA

- CONCEPTUAL PLAN UPDATES
- MAGNITUDE OF INITIAL COST DISCUSSION
- NEXT STEPS

AGENDA

- CONCEPTUAL PLAN UPDATES
- MAGNITUDE OF INITIAL COST DISCUSSION
- NEXT STEPS

AGENDA

- CONCEPTUAL PLAN UPDATES
- MAGNITUDE OF INITIAL COST DISCUSSION
- NEXT STEPS

A vibrant water park scene featuring a large blue slide with a white canopy at the top. In the foreground, several people are floating on blue inflatable rafts in a pool. The background shows lush green trees and a clear blue sky with white clouds. The overall atmosphere is bright and sunny.

CONCEPTUAL PLANS UPDATE

R-1 RESIDENTIAL DISTRICT

- 25 FEET FRONT SETBACK

350 FEET MAXIMUM TRAVEL DISTANCE

STORMWATER COLLECTION

- COMBINATION SEWER ALONG DEMPSTER
WEST TO NORTH BRANCH OF CHICAGO RIVER
- NORTHWEST CORNER OF PARK LOWEST GRADES, BUT SITE IS VIRTUALLY FLAT.
BEST LOCATION TO MANAGE STORM WATER

NO UNDERGROUND STORMWATER STORAGE ALLOWED

NO SWAPPING OUT HARDSCAPE

50 PARKING
STALLS EXISTING
ALONG WEST
SIDE*

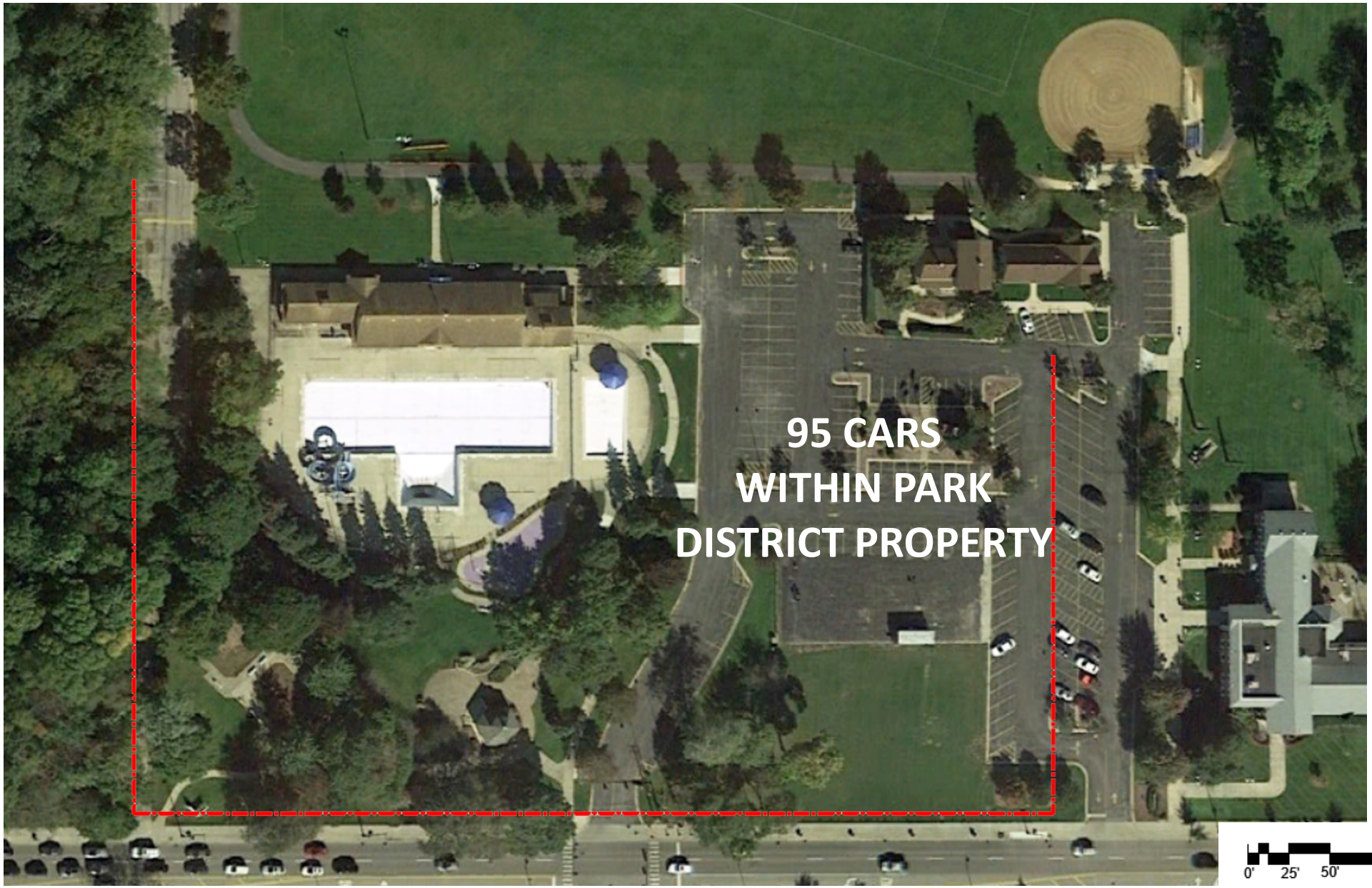


143 TOTAL
PARKING STALLS
EAST SIDE OF
POOL*

*WITHIN VILLAGE
RECOMMENDED 350'
MAXIMUM WALKING
DISTANCE.



EXISTING SITE PLAN



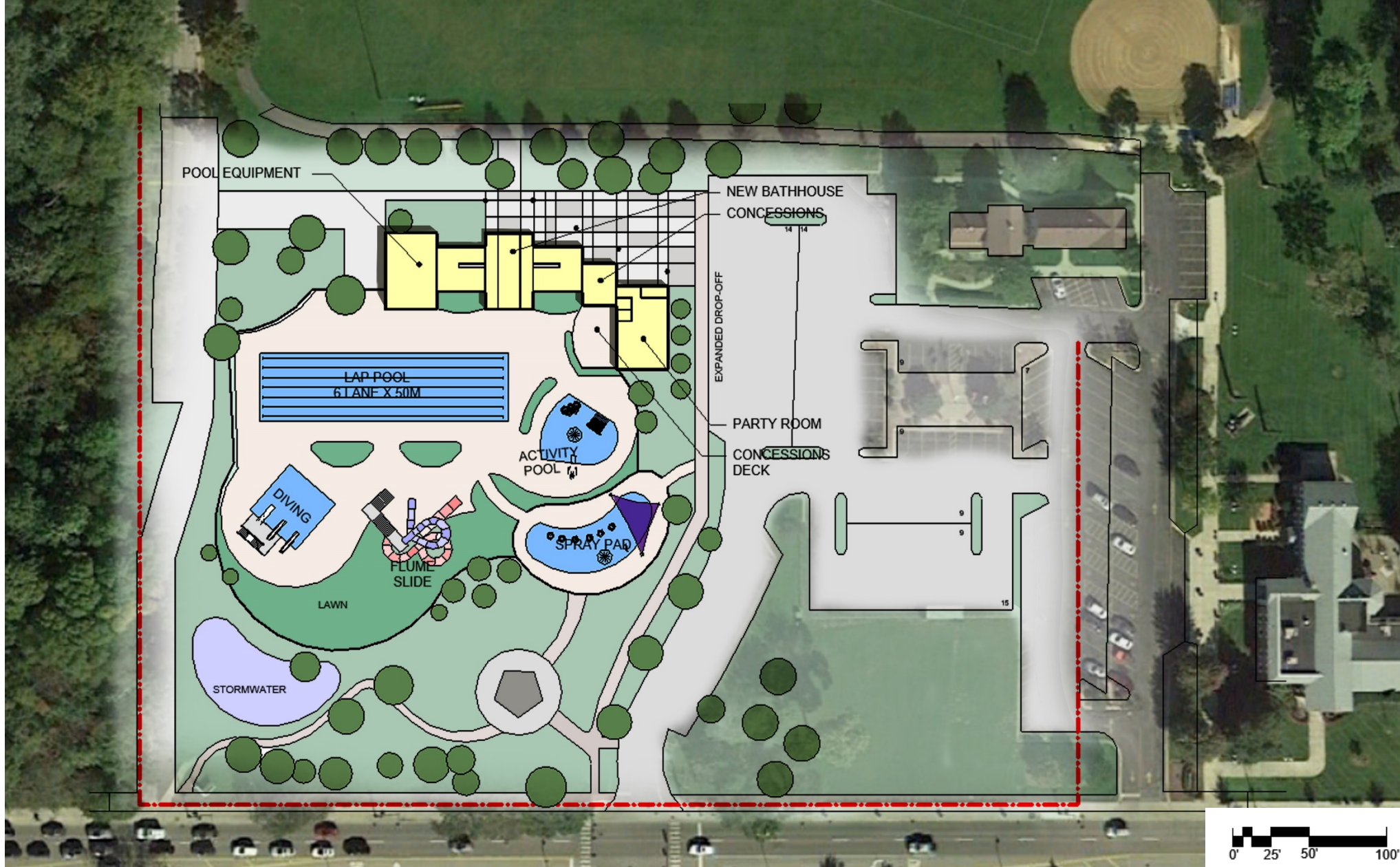
**50 EXISTING STALL WEST SIDE
OF POOL**

**95 EXISTING STALLS EAST OF
POOL**

145 STALLS EXISTING TOTAL

**95 CARS
WITHIN PARK
DISTRICT PROPERTY**

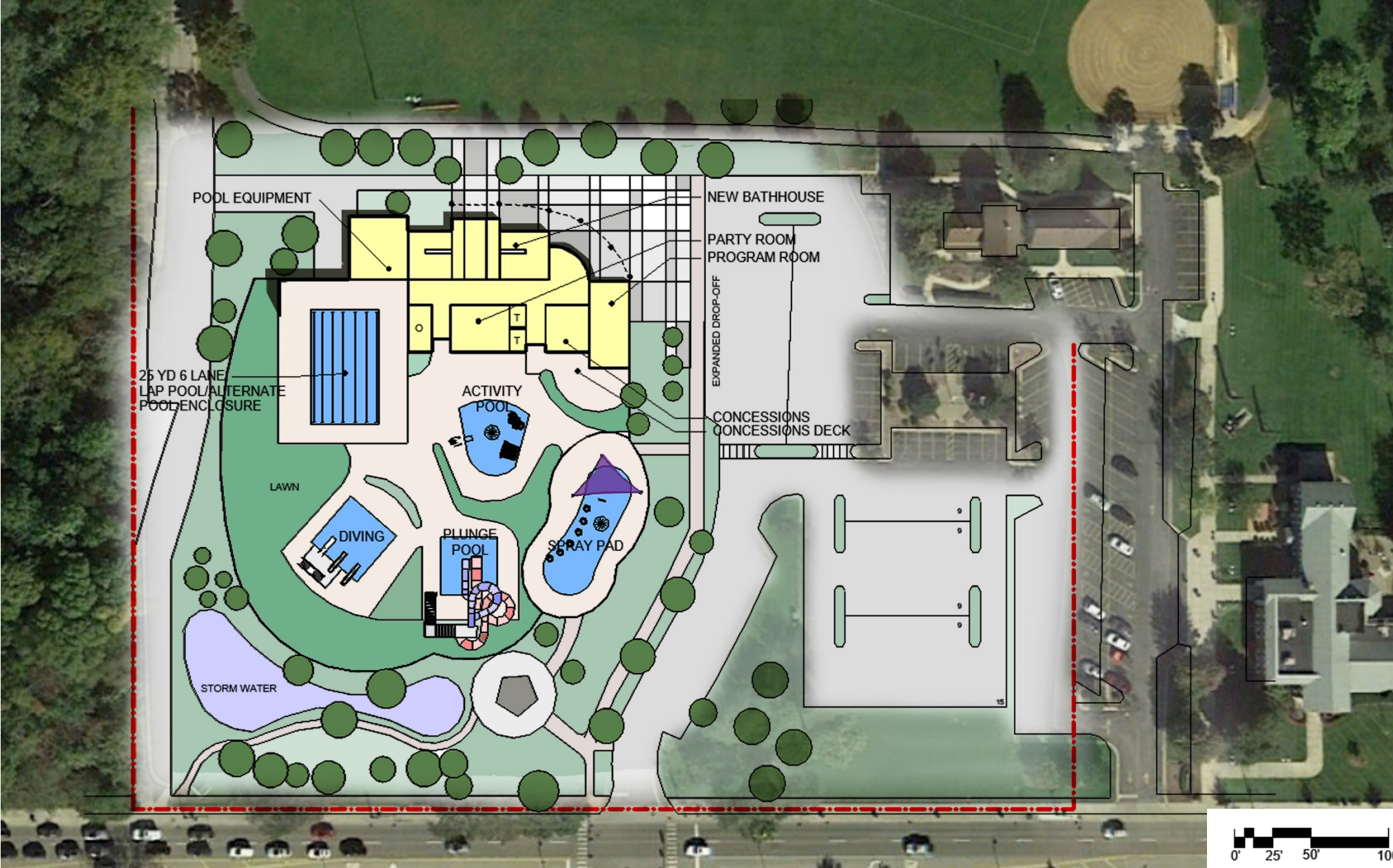




**OPTION 1 PROPOSED
PARKING**

EAST OF SITE: 95 STALLS
WEST OF SITE: 50 STALLS
NET ADDITIONAL: 18 STALLS

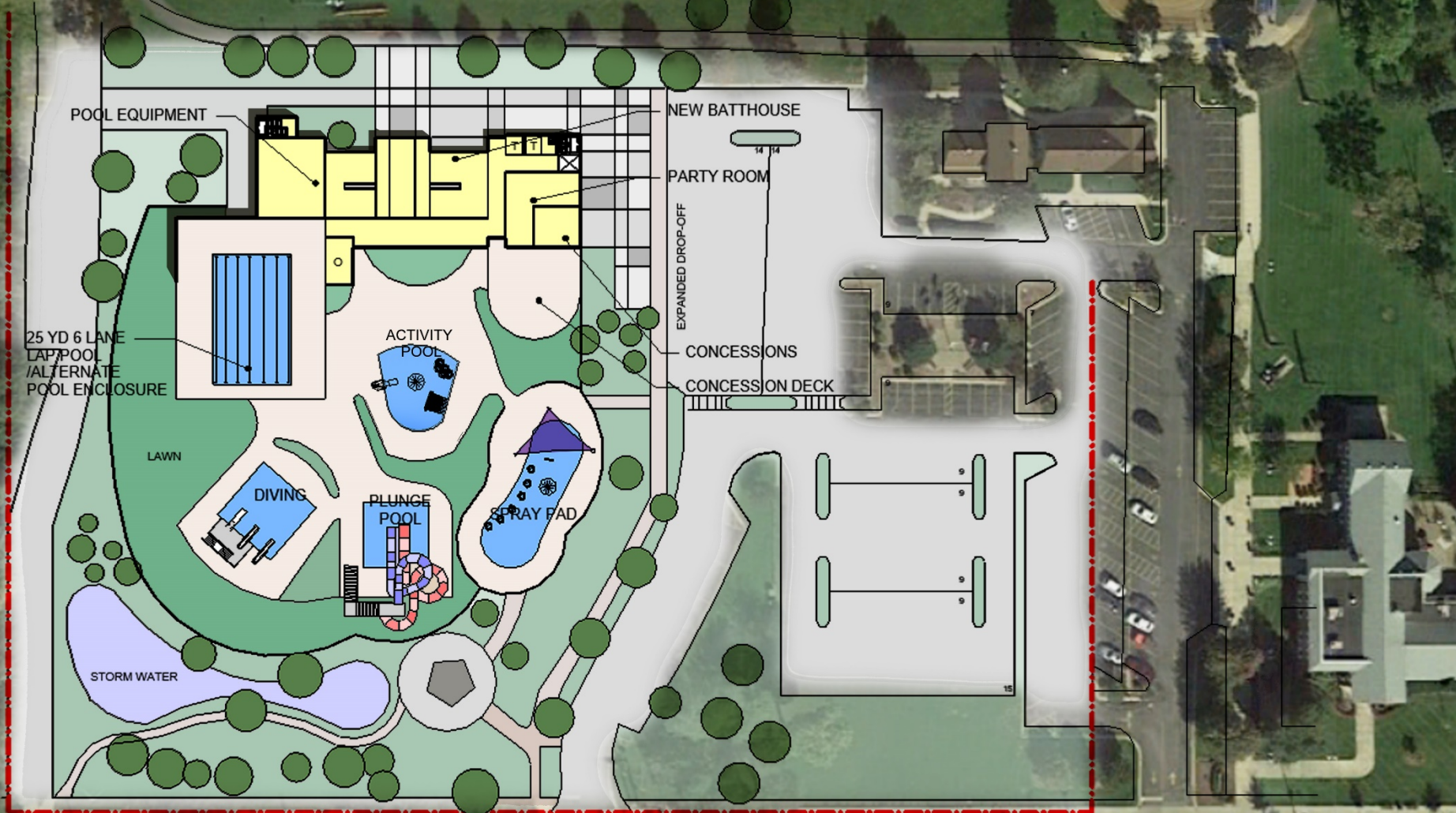
TOTAL PARKING SERVING
PARK DISTRICT: 163 STALLS



OPTION 2A PROPOSED PARKING

EAST OF SITE: 95 STALLS
WEST OF SITE: 50 STALLS
NET ADDITIONAL: 33 STALLS

TOTAL PARKING SERVING
PARK DISTRICT: 178 STALLS

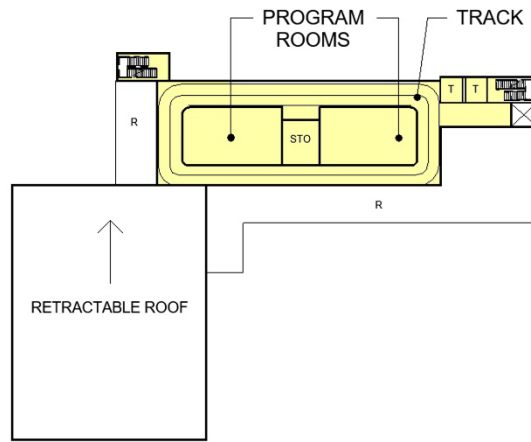


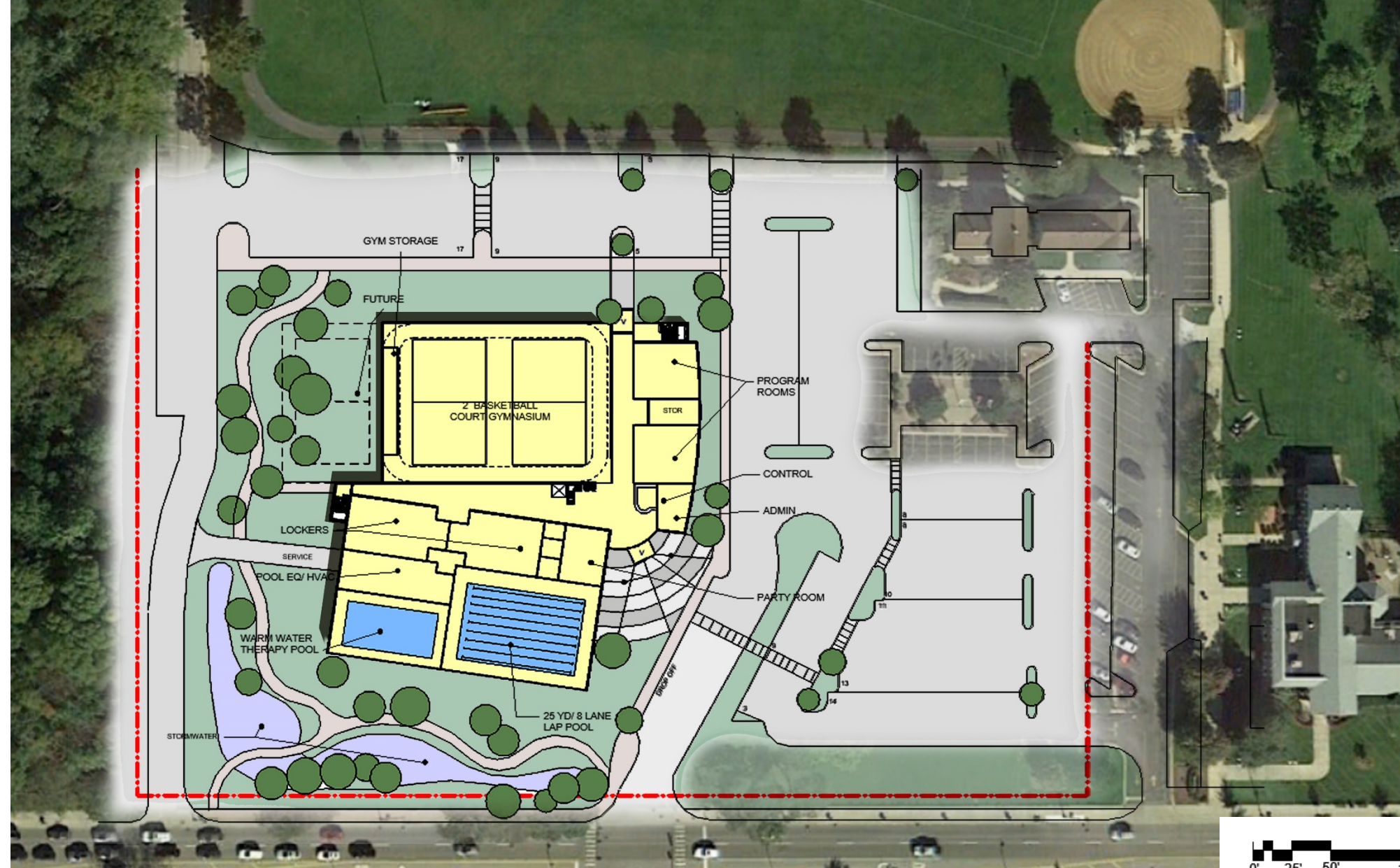
**OPTION 2B PROPOSED
PARKING**
EAST OF SITE: 95 STALLS
WEST OF SITE: 50 STALLS
NET ADDITIONAL: 33 STALLS

TOTAL PARKING SERVING
PARK DISTRICT: 178 STALLS



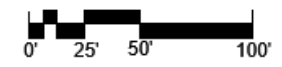
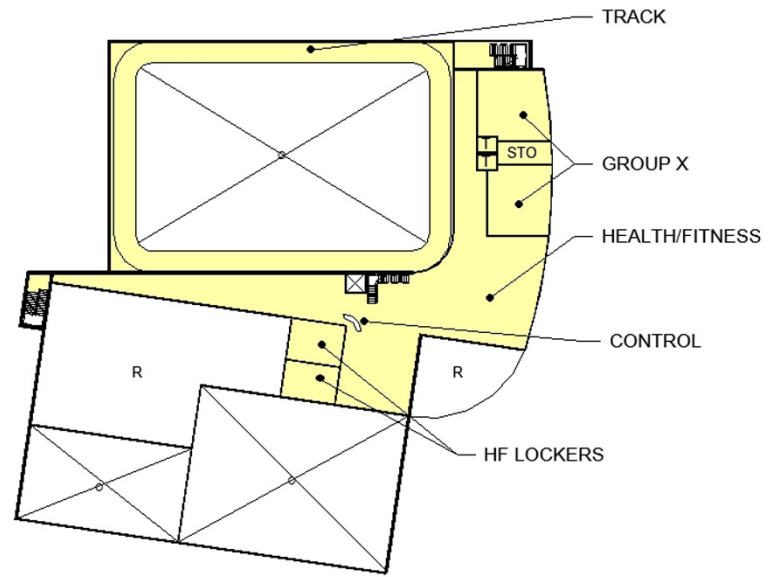
SITE PLAN OPTION 2B- GROUND FLOOR





OPTION 3 PROPOSED PARKING
 EAST OF SITE: 95 STALLS
 WEST OF SITE: 50 STALLS
 NET ADDITIONAL (NORTH AND EAST): 107

TOTAL PARKING SERVING PARK DISTRICT: 252



SITE PLAN OPTION 3- UPPER FLOOR

		OPTION 1	OPTION 2A	OPTION 2B	OPTION 3
		AREA IN SF			
AQUATIC AREA	LAP POOL	7,380	3,375	3,375	7,000
	ACTIVITY POOL	1,735	1,735	1,735	0
	SPRAY PAD	2,515	2,515	2,515	0
	DIVING	1,600	1,600	1,600	0
	PLUNGE POOL	0	1,200	1,200	0
	DECK SPACE	27,465	26,690	28,340	0
	WARM WATER THERAPY	0	0	0	3,650
PROGRAM AREA	LOCKERS	1,725	1,780	2,185	5,225
	POOL EQUIPMENT	1,655	1,570	1,750	1,675
	CONCESSIONS	585	865	600	0
	FAMILY TOILETS	140	300	400	360
	PARTY ROOM	1,530	1,500	1,500	1,050
	PROGRAM ROOMS	0	1,460	2,150	3,120
	ADMIN	0	460	460	660
	HEALTH/FITNESS	0	0	0	5,000
	GYMNASIUM	0	0	0	15,845
	GROUP X	0	0	0	2,200
	TRACK	0	0	3,000	4,230
	NET TO GROSS/ CIRCULATION	2,275	4,610	6,610	15,120
	TOTAL GSF	7,910	12,545	18,655	65,135

PROGRAM SUMMARY

|||||

|||||

|||||

The background image shows a vibrant water park scene. In the upper half, there are several blue water slides with white railings, set against a backdrop of green trees and a blue sky with white clouds. A lifeguard stand is visible on a raised platform. In the lower half, a group of people are floating on blue inflatable tubes in a lazy river. The water is a clear, bright blue. The overall atmosphere is sunny and recreational.

OUTDOOR AQUATIC PROGRAM IMAGES

|||||

|||||

|||||

























A background image of a water park. In the upper half, there are blue water slides with a lifeguard stand on top. In the lower half, people are floating on blue inflatable rafts in a lazy river. The scene is outdoors with trees and a blue sky with clouds.

INDOOR / OUTDOOR AQUATIC IMAGES





















A background image of a water park. In the upper left, there are blue water slides. In the center, a stone wall separates the slides from the foreground. In the foreground, several people are floating on blue inflatable rafts in a lazy river. The sky is blue with white clouds.

INDOOR AQUATIC IMAGES

|||||

|||||

|||||





A vibrant water park scene featuring a large, winding blue slide in the background. In the foreground, several people are relaxing in blue inflatable tubes as they float down a lazy river. The area is surrounded by lush greenery and a stone wall. The sky is bright blue with scattered white clouds. The overall atmosphere is sunny and recreational.

RECREATION CENTER IMAGES

|||||

|||||

|||||





CORNERSTONE CAFE

EXIT



























AMBITION
TRANSFORMATION
CHALLENGE
ACHIEVE
WELLNESS
POSITIVE
EXCEL

EXCELLENCE
EFFICIENCY
MOTIVATION
CONFIDENCE
FITNESS











MAGNITUDE OF INITIAL COSTS

NEXT STEPS

PUBLIC AND STAKEHOLDER INPUT

[illegible]